

The Science, Ethics and Politics of Stem Cell Research



November 15, 2005
Hilton Washington

9 a.m.–2 p.m.
Stem Cell Research 101

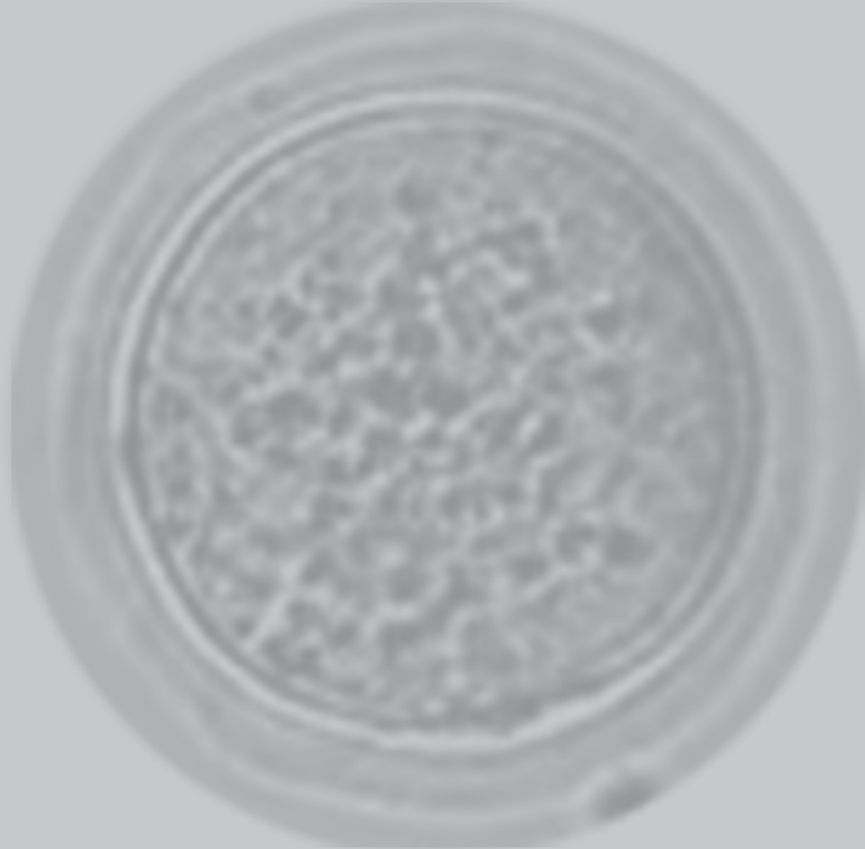
Crystal Ballroom
Lincoln and Monroe Rooms

JOHNS HOPKINS
INSTITUTIONS

Government, Community and Public Affairs
901 S. Bond St.
Suite 540
Baltimore, MD 21231

443.287.9900
www.jhu.edu/gcpa

JOHNS HOPKINS
INSTITUTIONS



SPONSORED BY:

JOHNS HOPKINS MEDICINE AND
THE PHOEBE R. BERMAN BIOETHICS INSTITUTE

JOHNS HOPKINS UNIVERSITY ALUMNI ASSOCIATION AND
JOHNS HOPKINS GOVERNMENT, COMMUNITY AND PUBLIC AFFAIRS

ROBERT H. LEVI LEADERSHIP PROGRAM IN BIOETHICS AND PUBLIC POLICY

8–9 a.m. Registration and Coffee



9:00 a.m. Welcome

LINDA ROBERTSON

Vice President, Government, Community and Public Affairs, Johns Hopkins University

9:20 a.m. Stem Cells and Stem Cell Alternatives*

JOHN GEARHART, PH.D.

C. Michael Armstrong Professor in Medicine; Professor, Gynecology and Obstetrics, Comparative Medicine, and Physiology; Co-Director, Stem Cell Program, Institute for Cell Engineering, Johns Hopkins University School of Medicine

HOWARD ZUCKER, M.D., J.D., L.L.M.

Associate Professor, Clinical Pediatrics and Clinical Anesthesiology, College of Physicians & Surgeons, Columbia University

Moderator: CHI DANG, M.D., PH.D.

Vice Dean for Research; Johns Hopkins Family Professor in Oncology Research; Professor of Medicine, Cell Biology, Oncology, Pathology & Joint Appointment in Molecular Biology & Genetics, Johns Hopkins University School of Medicine

10:20 a.m. Break

10:30 a.m. Ethics of Stem Cell Research

HILARY BOK, PH.D.

Henry R. Luce Professor, Bioethics and Moral and Political Theory, Krieger School of Arts and Sciences, Johns Hopkins University

ALFONSO GOMEZ-LOBO, D.PHIL.

Ryan Family Professor of Metaphysics and Moral Philosophy, Georgetown University, member, President's Council on Bioethics

Moderator: RUTH FADEN, PH.D., M.PH.

Philip Franklin Wagley Professor of Biomedical Ethics, Director, Phoebe R. Berman Bioethics Institute, Johns Hopkins University

11:30 a.m. Lunch/Keynote Address: The Legislative Landscape

REPRESENTATIVE MIKE CASTLE, DELAWARE

12:45 p.m. Politics of Stem Cell Research

WILLIAM B. NEAVES, PH.D.

President & CEO, Stowers Institute for Medical Research

ZACH HALL, PH.D.

President, California Institute for Regenerative Medicine; Professor Emeritus, Department of Neuroscience, University of California at San Francisco

RUTH FADEN, PH.D., M.PH.

KATHY HUDSON, PH.D.

Director, Genetics and Public Policy Center; Phoebe R. Berman Bioethics Institute, Johns Hopkins University

Moderator: JULIE ROVNER

Health Policy Correspondent, National Public Radio

1:45 p.m. Closing remarks

LINDA ROBERTSON

2:00 p.m. Adjourn

** There will be time for audience Q&A within each discussion.*

